


Procedure for Updating Acuvim II-V3/L-V4 meters by using Acuvview 2 (Scan)

Preparation:

1. Acuvim II-V3 or Acuvim L-V4 meters (all meters must have the same slave Address, Baud Rate, and Parity)
2. Acuvview 2 software
3. Acuvim meter firmware (.abin file)
4. RS485 USB Converter

Procedure

Step 1: Open “Acuvview 2.exe” software  Acuvview 2 with all Acuvim II-V3 or Acuvim L-V4 meters connected by RS485 in different communication port.

Step 2: The Acuvview 2 and connection interface shows, click the close label on the top left corner of the Add connection interface as shown in figure 1.

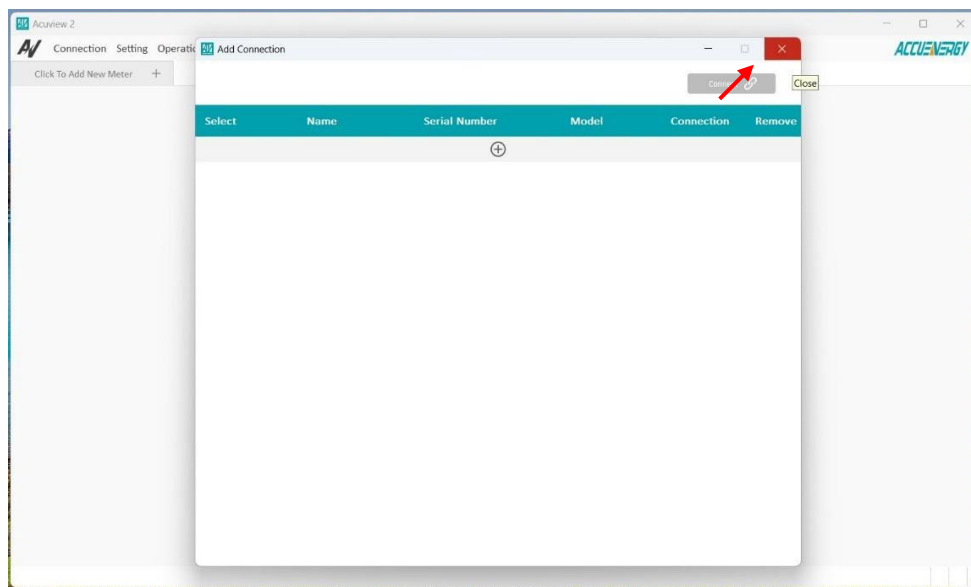


Figure 1

Step 3: Select Operation from the menu bar at the top side of the software, then select Firmware Update... to open the Meter Update window as shown in figure 2 below. The “No Available Meters!” message shows as show in figure 3 and click “Yes”.

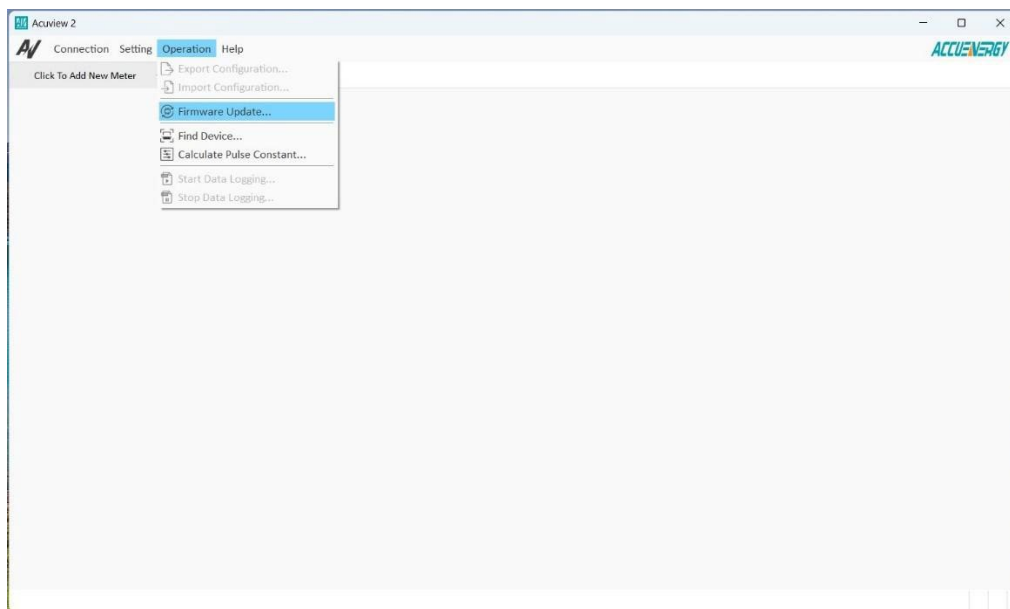


Figure 2

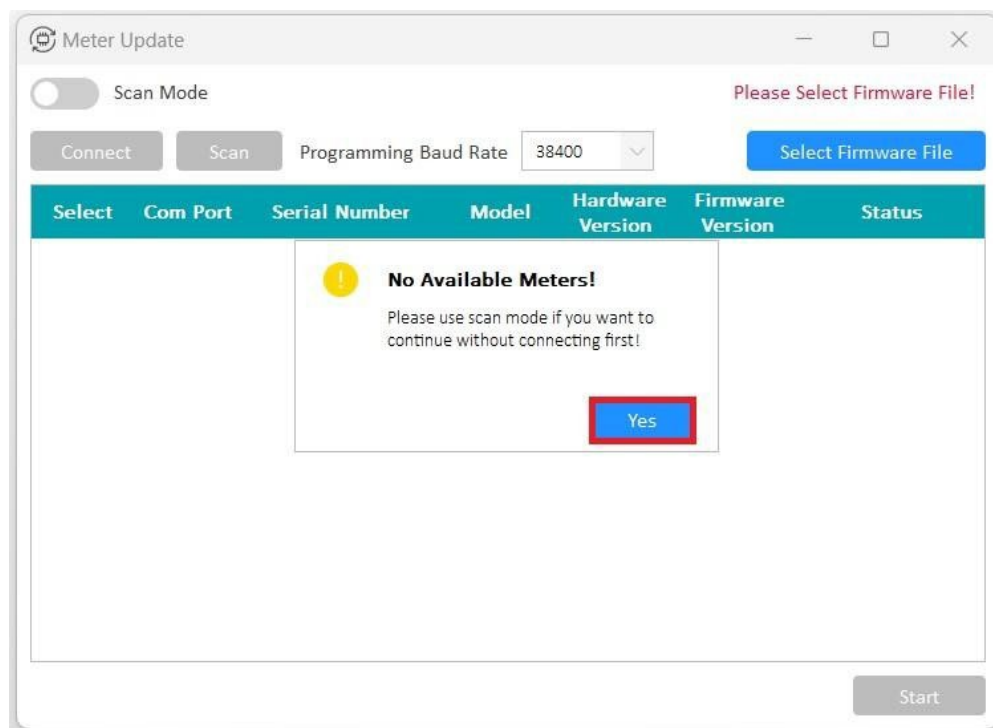


Figure 3

Step 4: Click the left bar of the Scan Mode to enable the Scan Mode, then click “Scan”.

The window of “Scan Finished!” will shown as the figure 4. Click “Yes”.

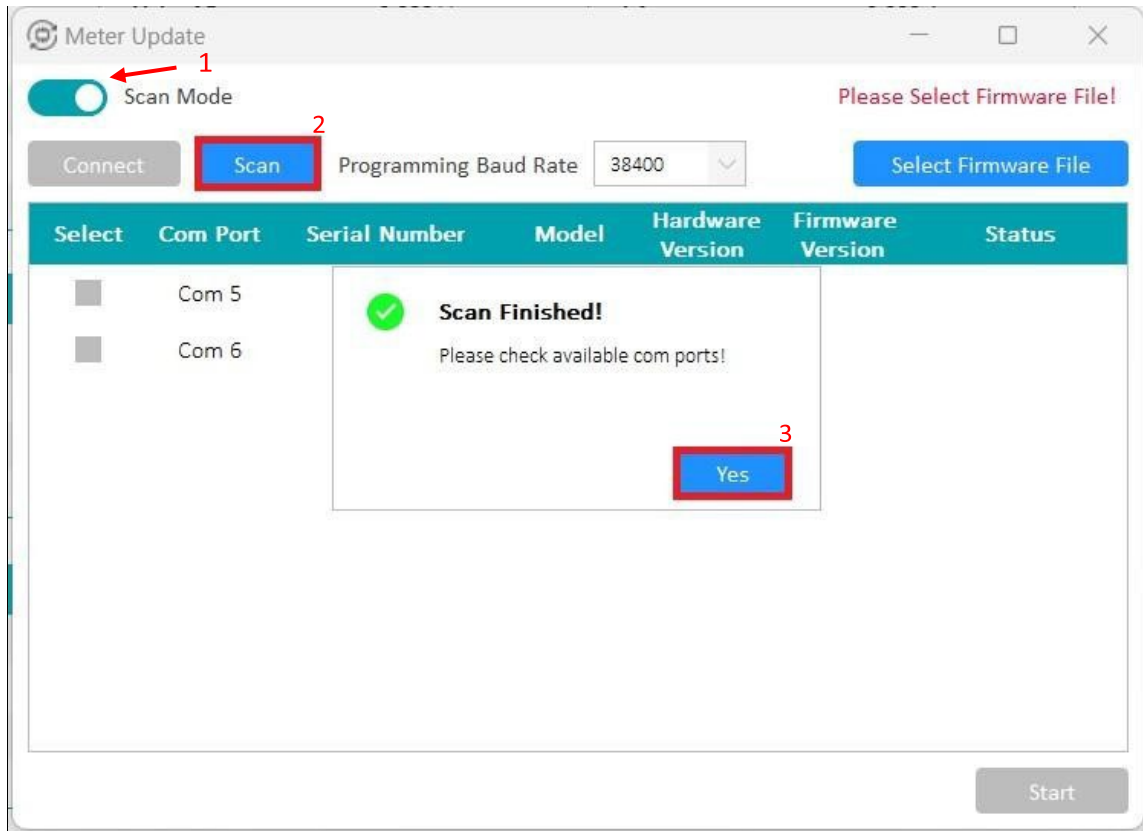


Figure 4

Step 5: select the “Baud Rate” as 115200 and click on Select Firmware File as shown in figure 5 below, the target file will load as shown in figure 6.

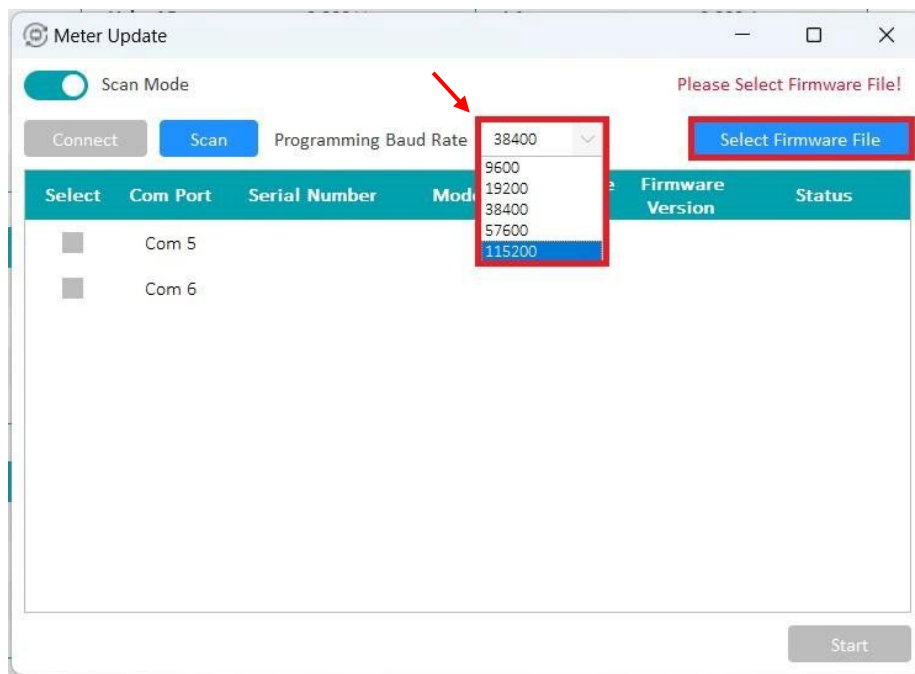


Figure 5

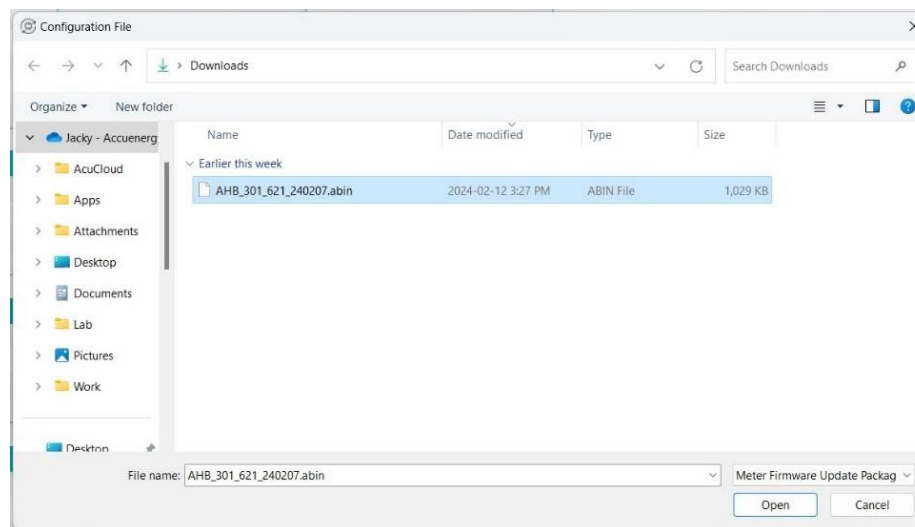


Figure 6



Locate the file in the appropriate folder.

NOTE: In the case above, the file name is: AHB_301_621_240207.bin

Select the file and click “Open”.

6: Once the model, hardware version, firmware version, files name appears at the top of the Meter Update interface as show as figure 7, “check” all boxes for the target meter Com Ports and click “Connect”. The connect Setting window will show as figure 8.

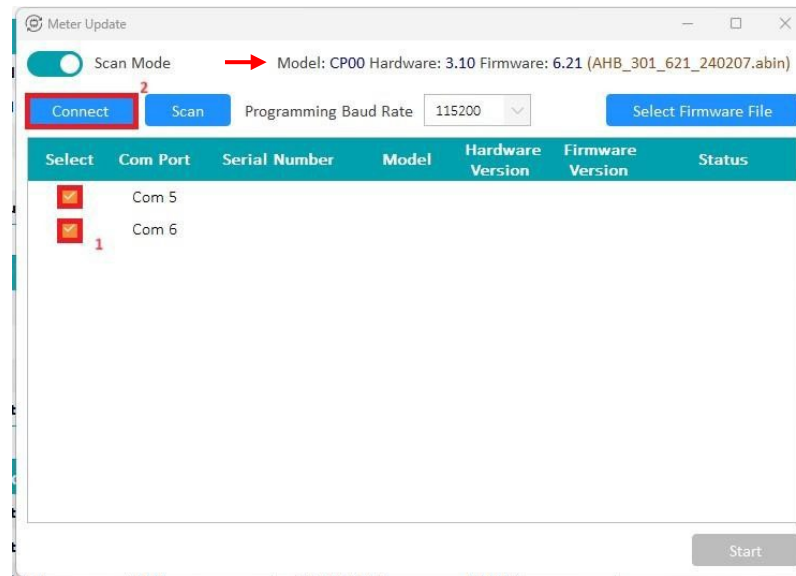


Figure 7

Step 7: Change the connect setting according to the meter system settings then click “OK”.

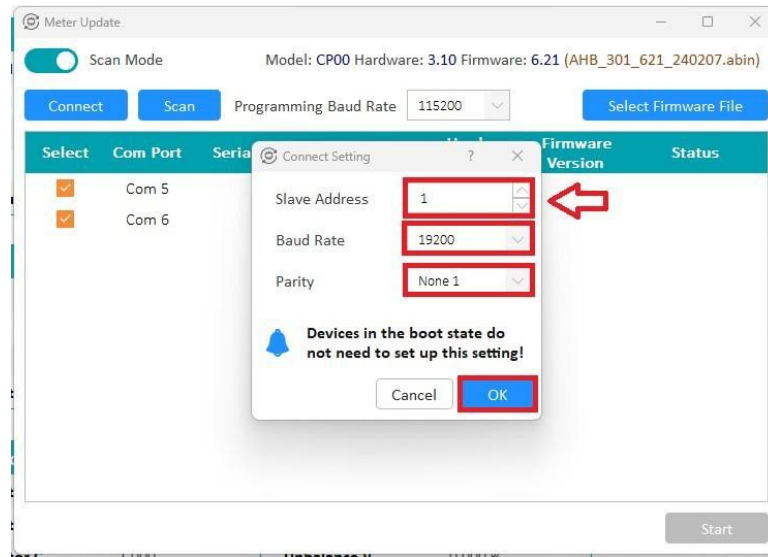


Figure 8

NOTE: To make all meter connected to meter update, all the Slave Address, Baud Rate, and Parity setting must be match with the target meters RTU settings.

8: Once the Status show target meters Com Port “Connected!”, click “Start”. (As shown as figure 10) The window of “Do you want to continue?” should shows as figure 11 and click “Yes”.

If some meter Com Port shows Connected Failed! That means those meters with other setting. However, those connected meters can still process the firmware update (look at the appendix page).

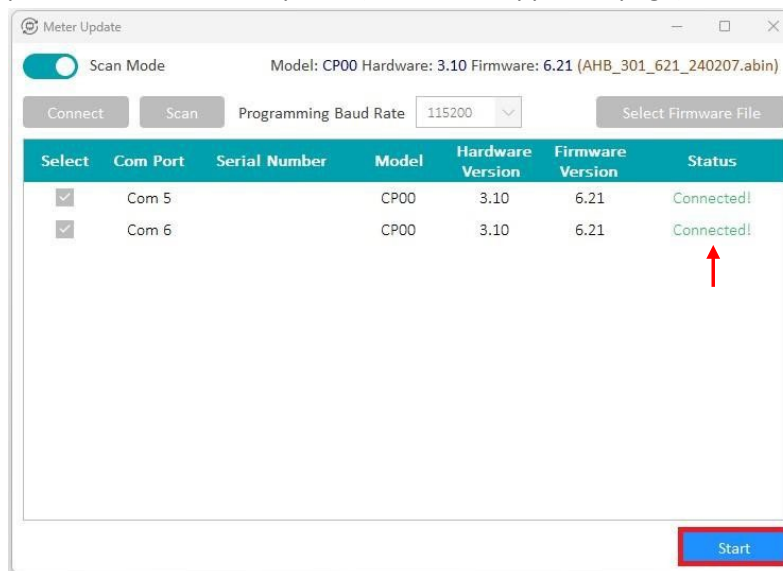


Figure 9

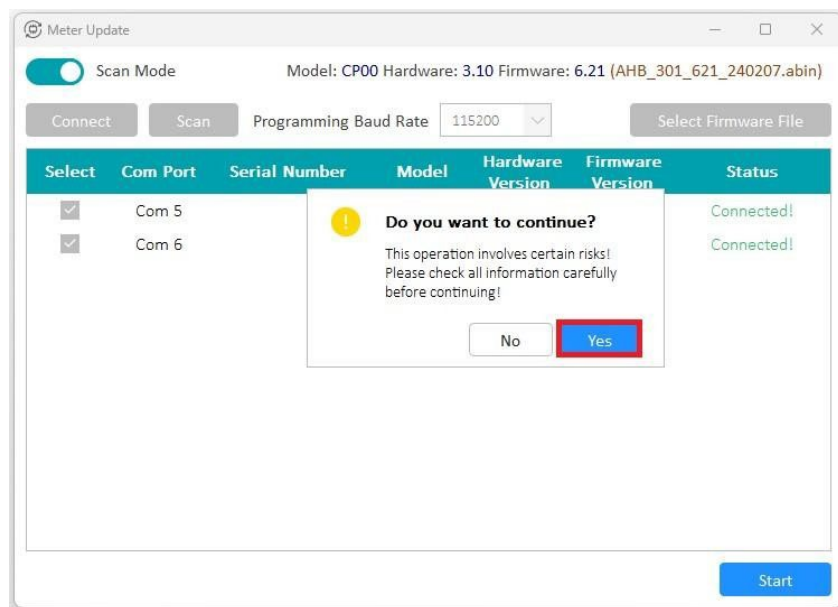


Figure 10

The updating process will begin, as shown in figure 12 below.

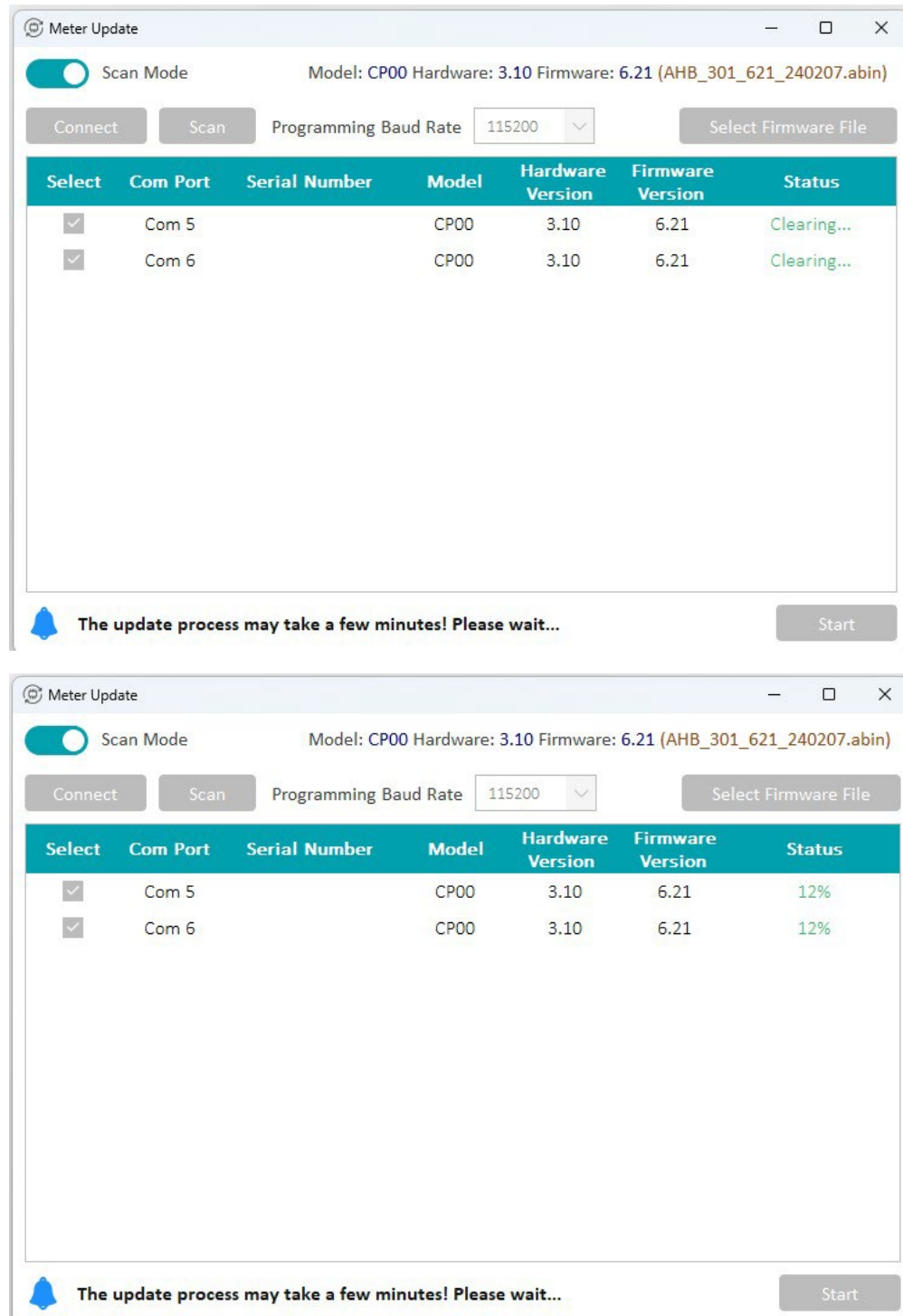
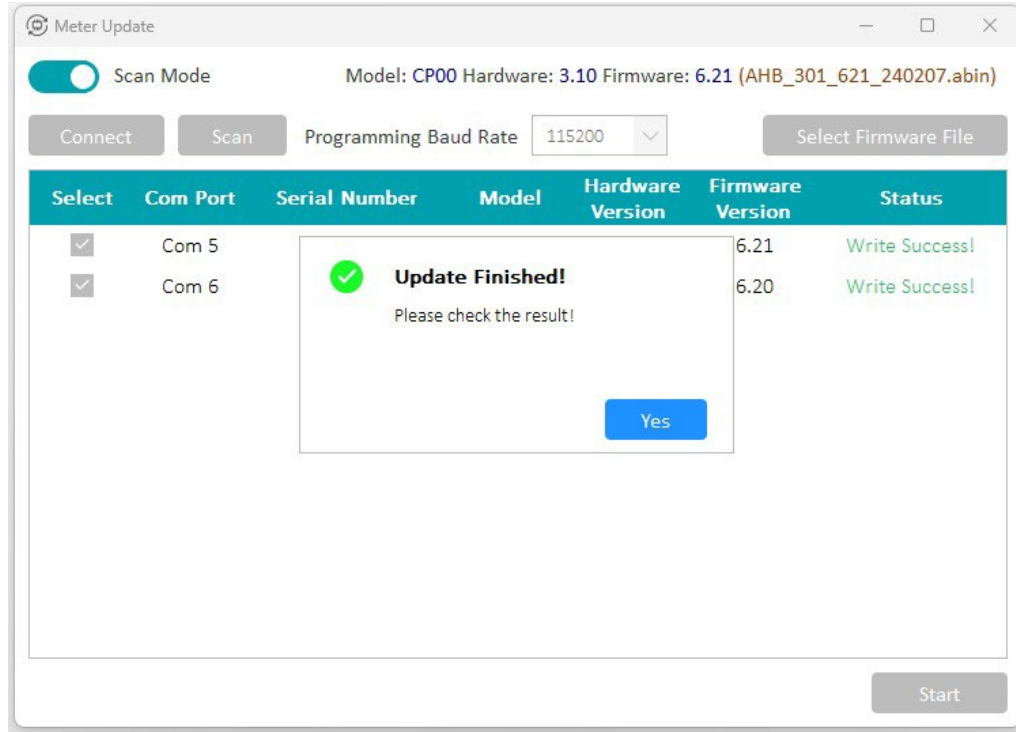
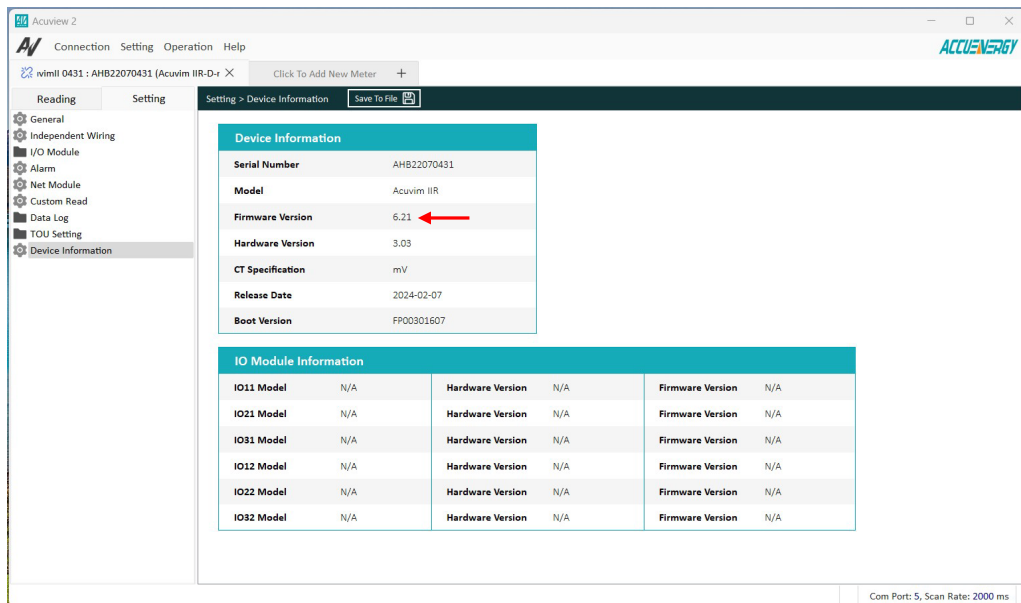


Figure 11



Meters have now been updated. To confirm the update, you can restart the meter and note the firmware version displayed on the screen for a few seconds OR check the “Device Information” in Acuvim 2 setting.



Appendix

The connection fails due to different settings in the meter, but those Com Port connected meters can be continuous to the process of firmware update as below steps:

Step 1: Once the Status show some of the target meters Com Port “Connected!”, click “Start”. (As shown as figure 13)
The window of ‘Do you want to continue?’ should shows as figure 14 and click “Yes”.

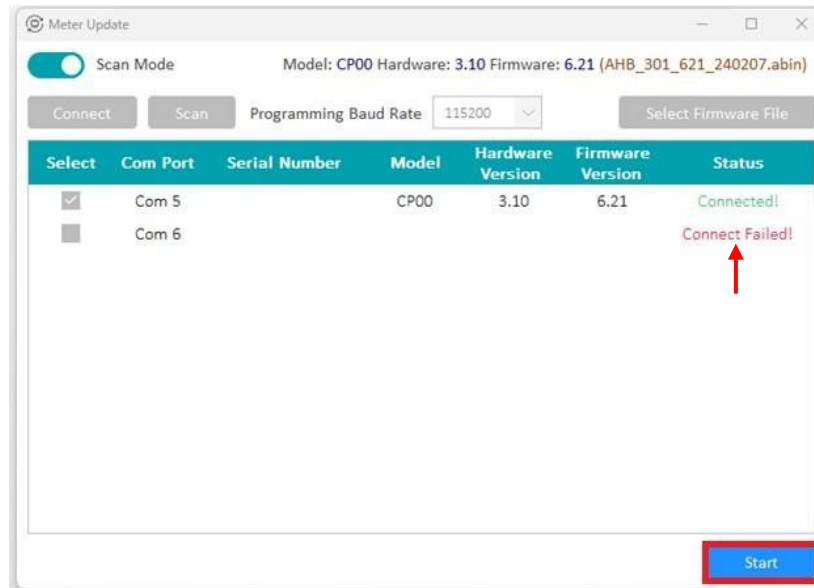


Figure 12

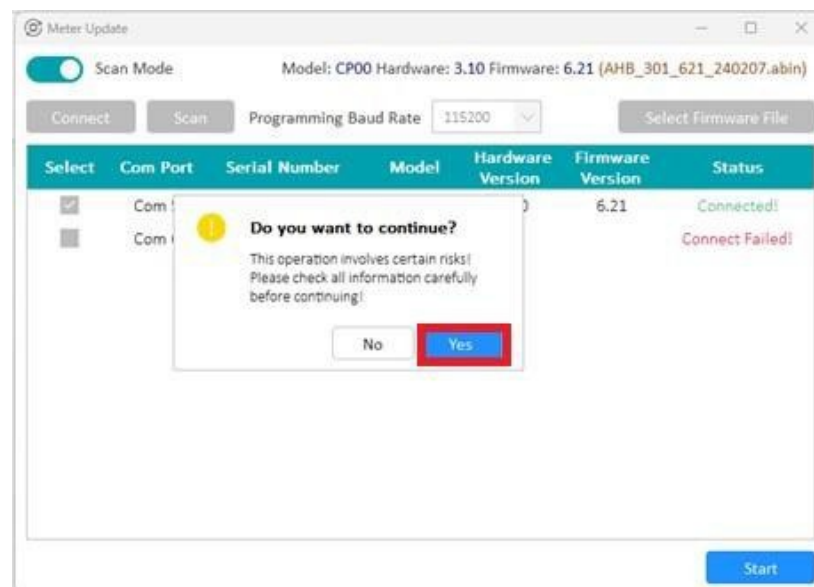


Figure 13

The updating process will begin, as shown in figure 15 below.

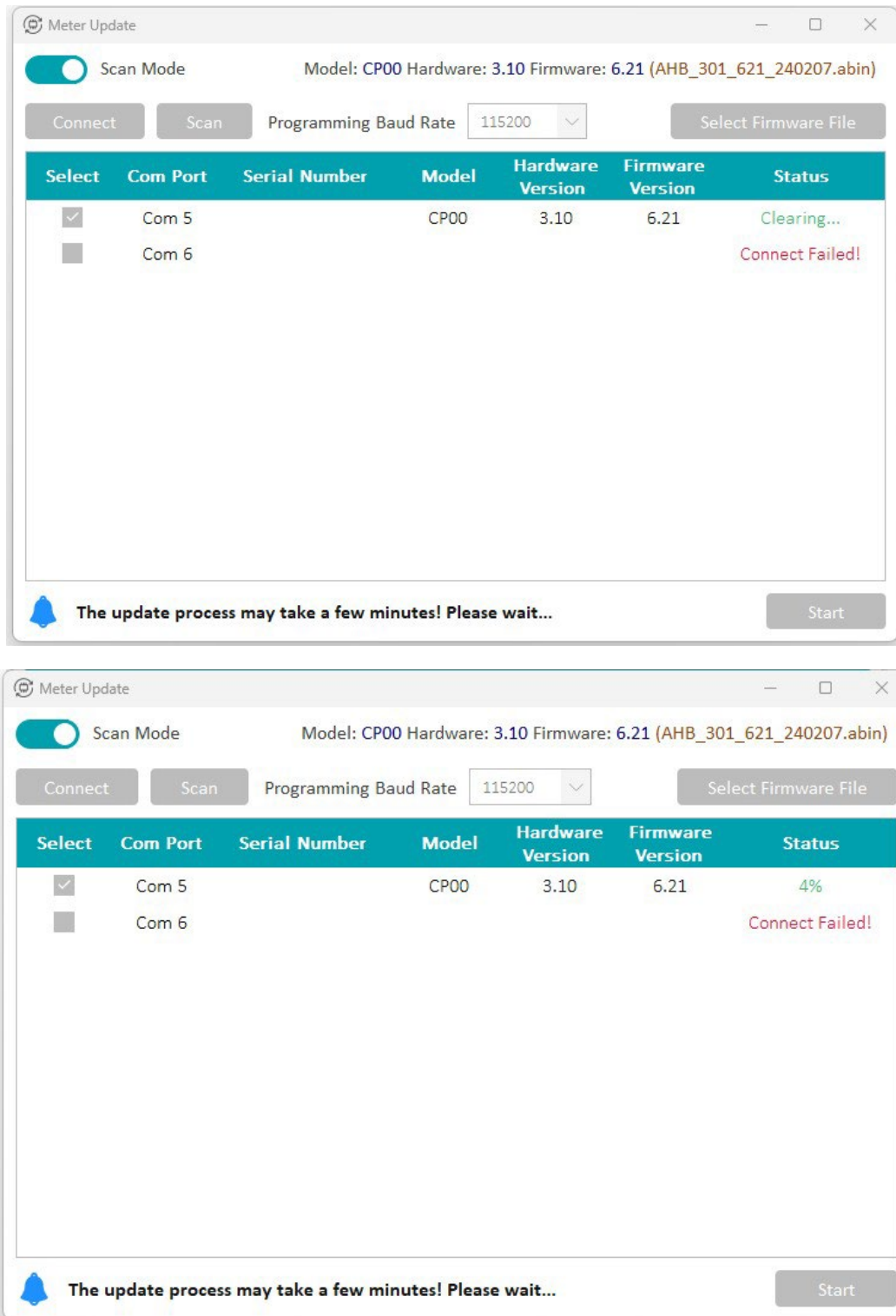


Figure 14

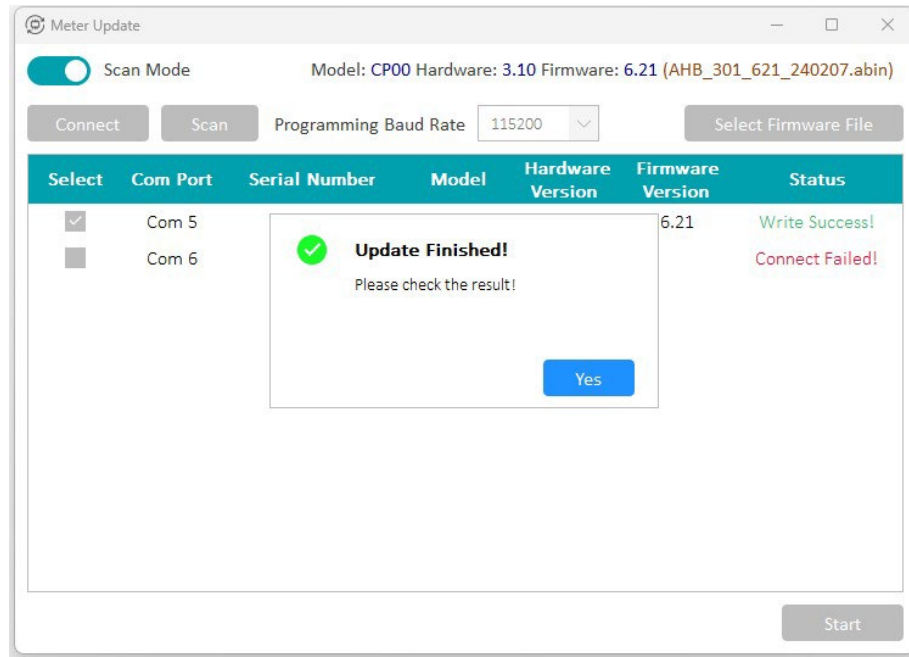


Figure 15

Those meters has now been updated. To confirm the update, you can restart the meter and note the firmware version displayed on the screen for a few seconds OR check the “Device Information” in Acuvue 2 setting.